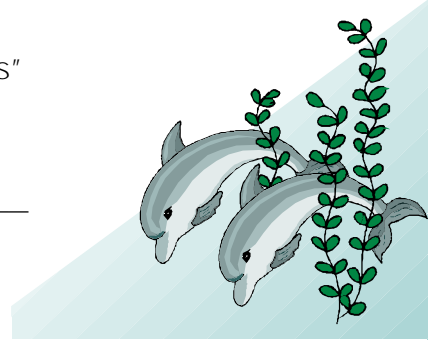


Story Guide "Island of the Blue Dolphins"
Name _____ Teacher _____

The genre of this story is _____
This type of story is set in the _____ and
portrays _____, _____, and
_____ that did or could have happened.



Preview and Predict: Look at the pictures. What do you think the story is about? _____

Vocabulary Power: Read pp. 224-225 and answer these questions.

1. Which word can be about a ship or a baseball?
2. What kind of animal is an abalone?
3. If someone says, "I'm so full I could burst," what might they have done?
4. How are the words vainer and vanity related?
5. When might a person be overcome with fear?
6. What word or words mean the same as forlorn?
7. Where would you expect to find a lair?

As you read, answer the following questions.

p. 228 Name three of the items Karana put in her basket:

p. 228 Why do you think she chose those items?

p. 229 What are some of the details the author uses to describe the setting as the story begins? Give at least two.

Summarize: How is the approaching storm affecting the tribe's plan to leave?

Where is Karana's brother?

p. 230 How do you think the characters feel as they approach the boats?

Why do you think so?

p. 231 Why does Karana look for Ramo?
How does she know he has remained on shore?

p. 231 What problem does Karana face?
What do you predict she will do to solve her problem?

p. 232 What reason does Chief Matasaip give Karana for not returning to shore?

p. 232 Why does he tell Karana that Rama will have what he needs to survive until the ship returns for him?

p. 233 Put yourself in Karana's place. What emotions do you think she might feel before and after she jumps from the ship?

p. 233 Did you predict that Karana would jump? What do you think may happen next?

Summarize: What happens after Karana realizes Ramo is not on board the ship?

p. 235 How do the wild dogs add a new element (change) into the plot?

p. 235 What is the meaning of the word "plentiful" on p. 235?

After you finish the story, answer these questions.

Did you enjoy finding out what happened when Karana tried to leave the island?

Why do you think the author included the description of the wild dogs?

At first Karana was mad at her brother, but her feelings changed when she saw how forlorn he looked. Why do you think her feelings changed?

If you had been a passenger on the ship, would you have voted to wait for Ramo or to leave?

Why?